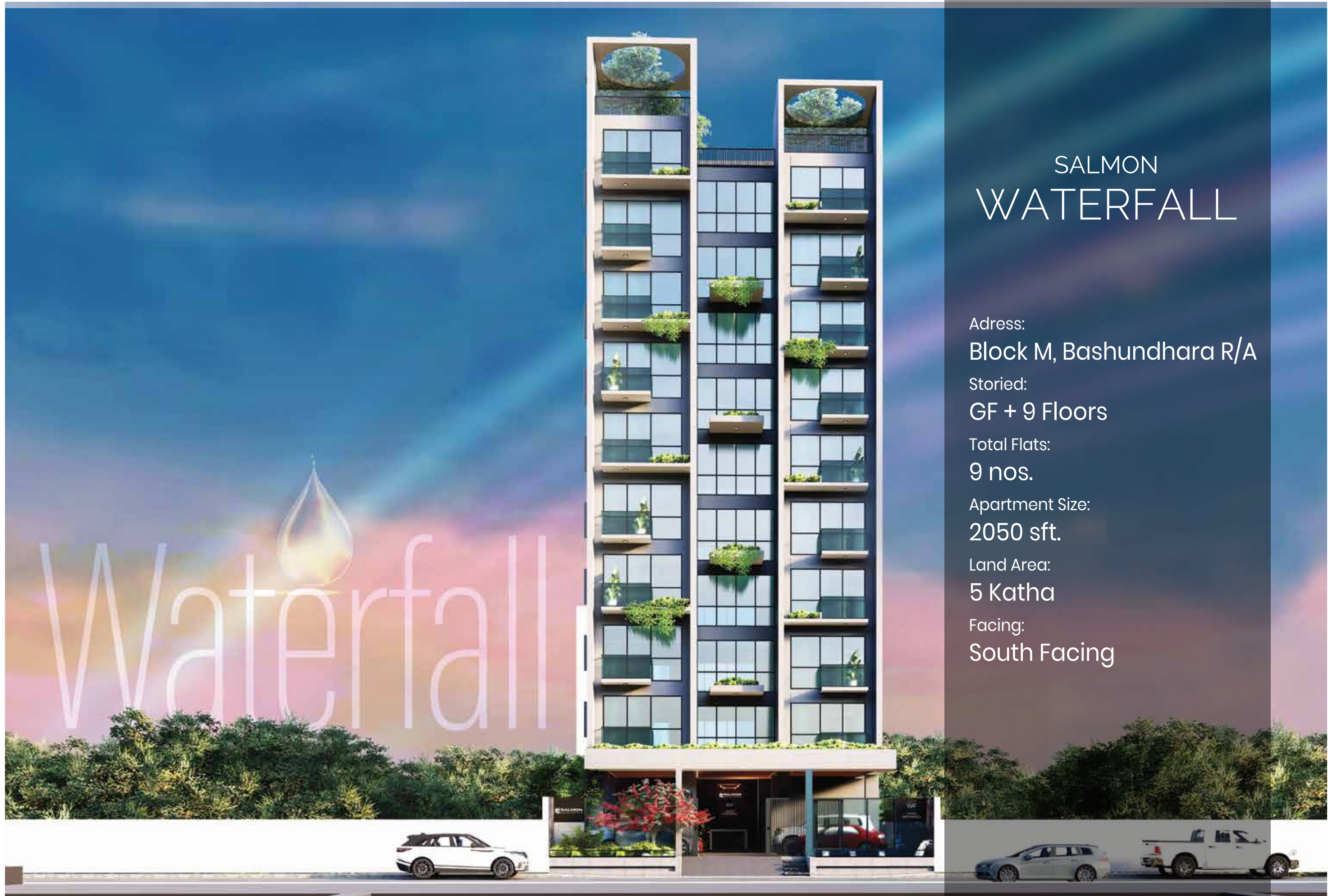




SALMON
WATERFALL



SALMON WATERFALL

Address:

Block M, Bashundhara R/A

Stories:

GF + 9 Floors

Total Flats:

9 nos.

Apartment Size:

2050 sft.

Land Area:

5 Katha

Facing:

South Facing



SALMON WATERFALL

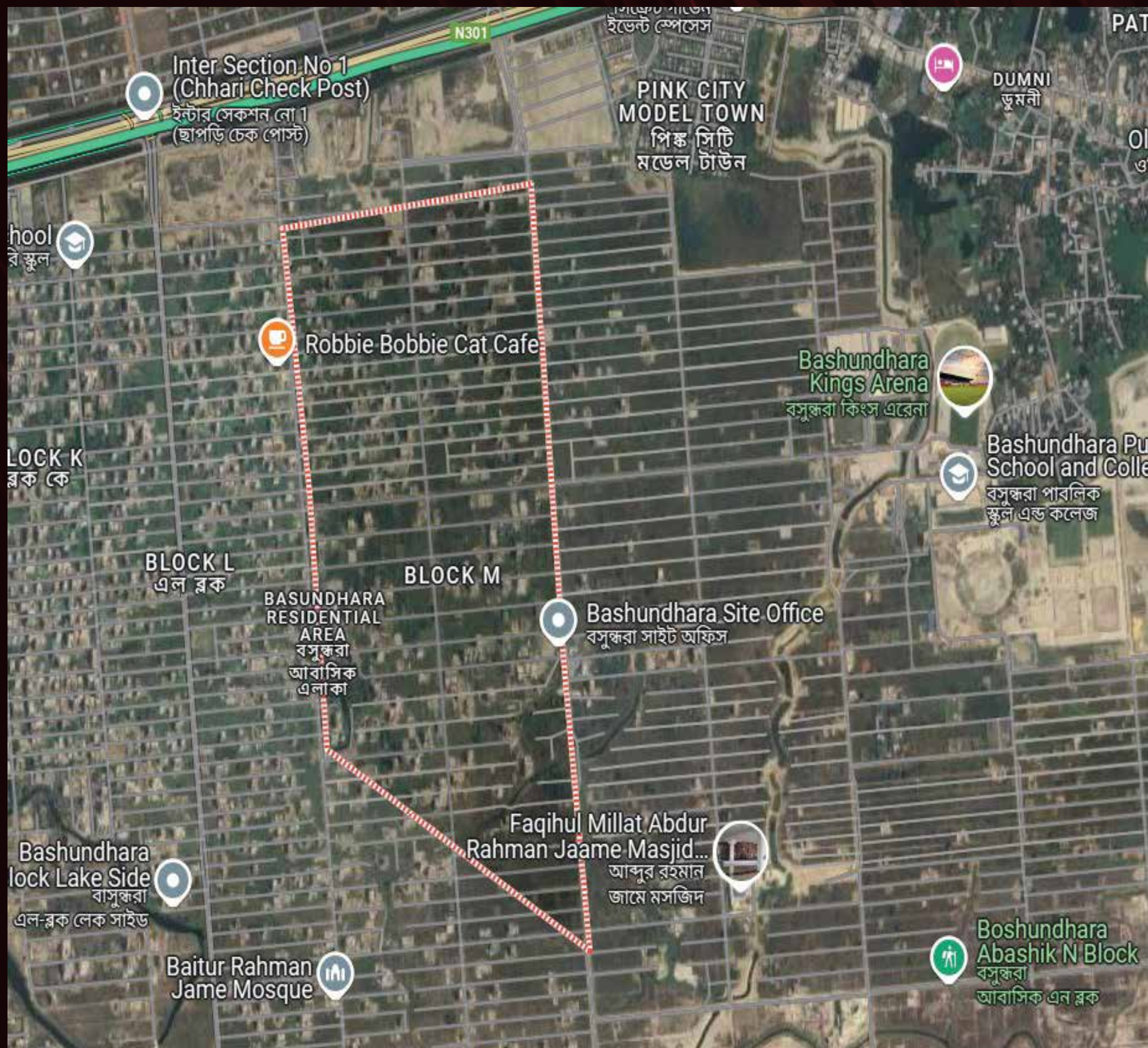
Welcome to Salmon Waterfall, an exceptional residential project located in the heart of Bashundhara Residential Area, N Block. Our innovative offering, Flat Ownership with Share of Land, redefines luxury living at an unmatched value—enjoy 40% less cost while securing a prestigious address.

A limited collection of nine ultra-exclusive and ultra-luxurious homes, designed for life to be lived in infinite abundance. Iconic architecture, elegant layouts, unbeatable amenities, lush green spaces and the most sought-after interior features make Salmon Waterfall more than a residence – a veritable masterpiece of artful design and the pinnacle of luxurious living in all of its aspects.

Ensuring an exclusive living experience for a select few.



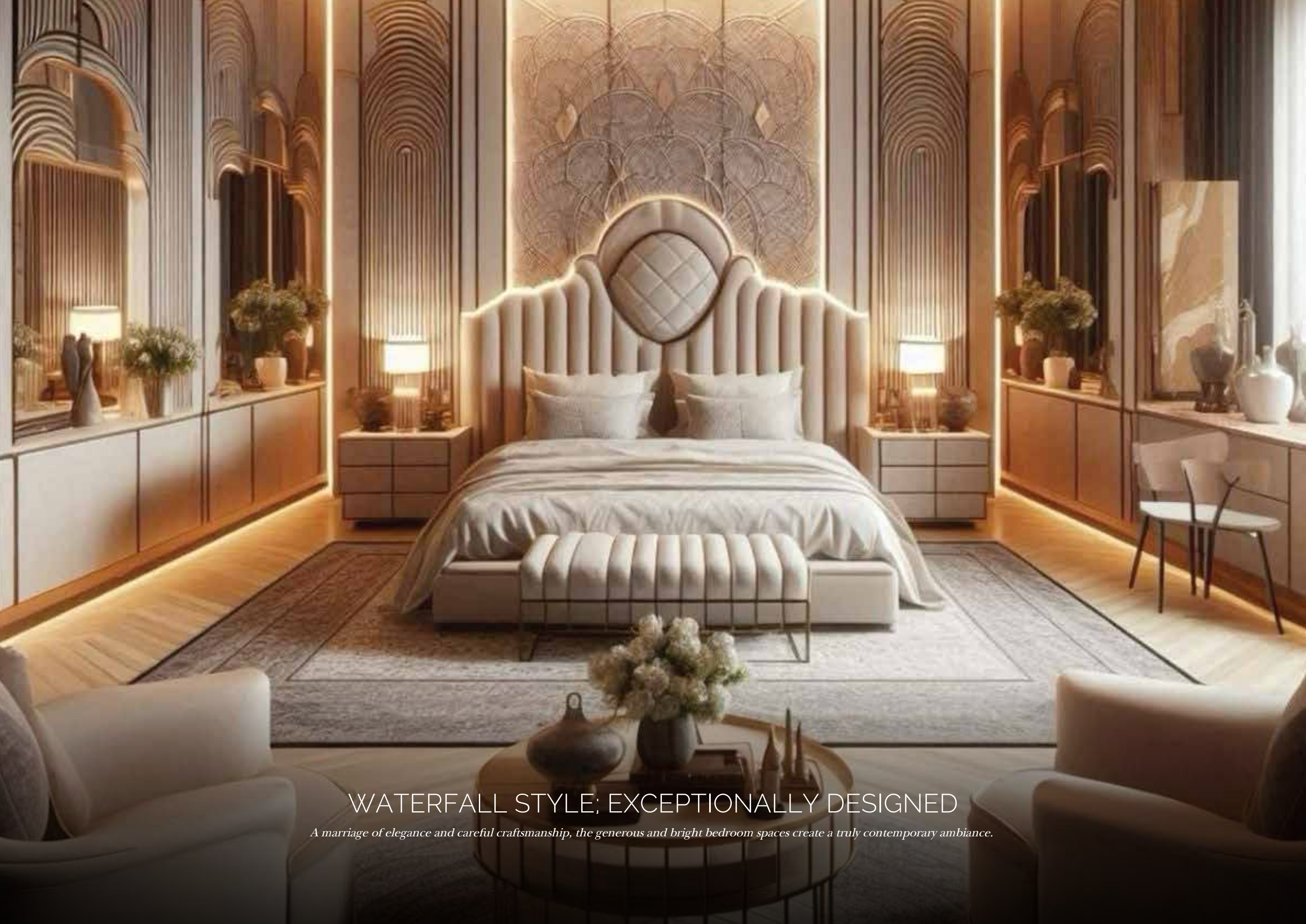
Birds Eye View
Salmon Waterfall



Location

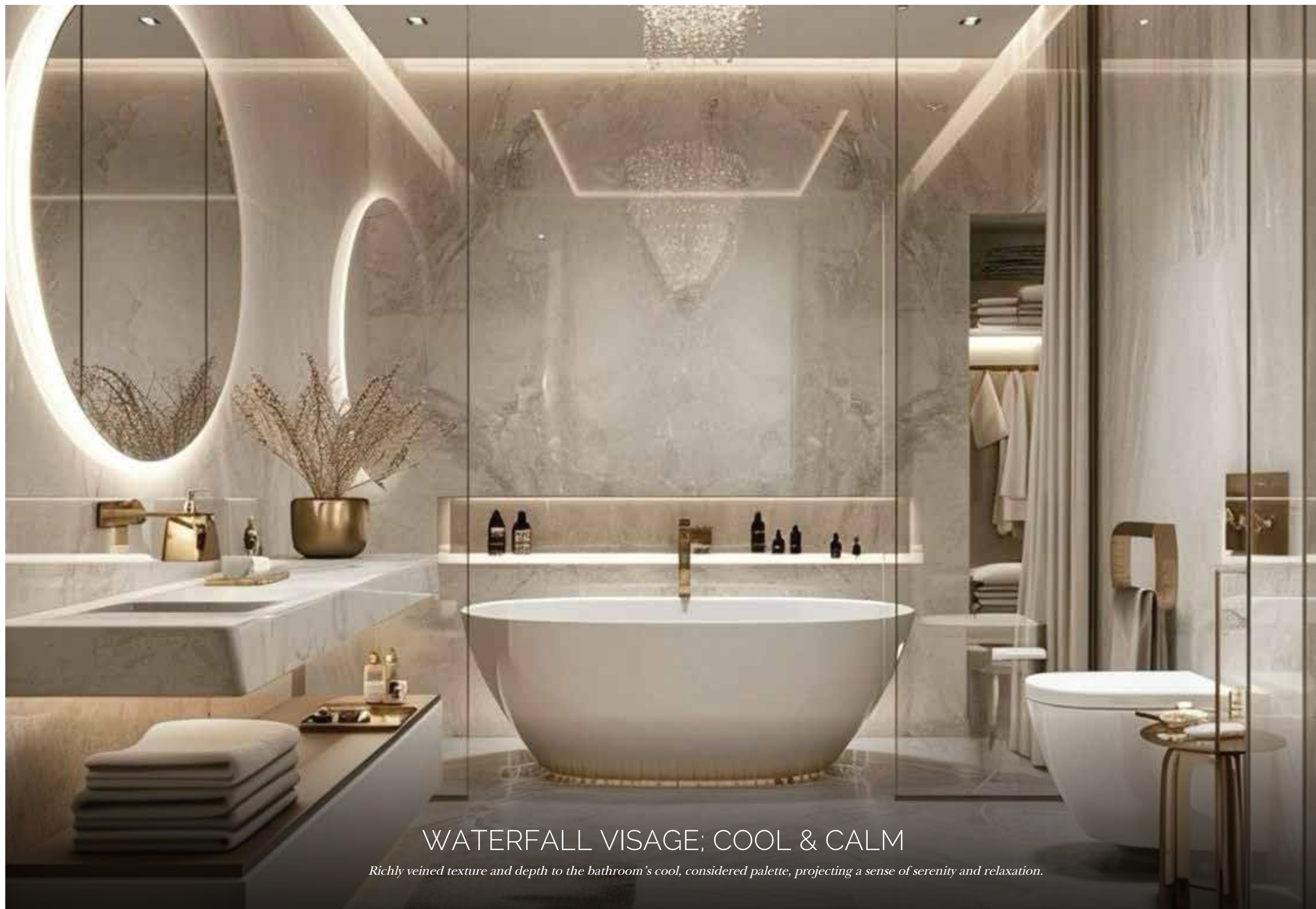
Salmon Bellissimo is perfectly situated in one of the most coveted locations within Bashundhara Residential Area, M Block, offering unmatched convenience and accessibility. This prime address places you just a short walk away from key landmarks and amenities that elevate your lifestyle:

- **Mosque Bashundhara:** Located within walking distance for your spiritual needs.
- **Bazar Protidin:** Your daily shopping needs are met effortlessly with this nearby marketplace, providing fresh produce, groceries, and essentials.
- **Bashundhara Kings Arena and Stadium:** Enjoy the thrill of live sports and events at this renowned venue, just a stroll away from your doorstep.
- **Kids Recreation Zone:** A dedicated area for children to play, explore, and grow, ensuring that your little ones have access to a safe and fun environment.



WATERFALL STYLE; EXCEPTIONALLY DESIGNED

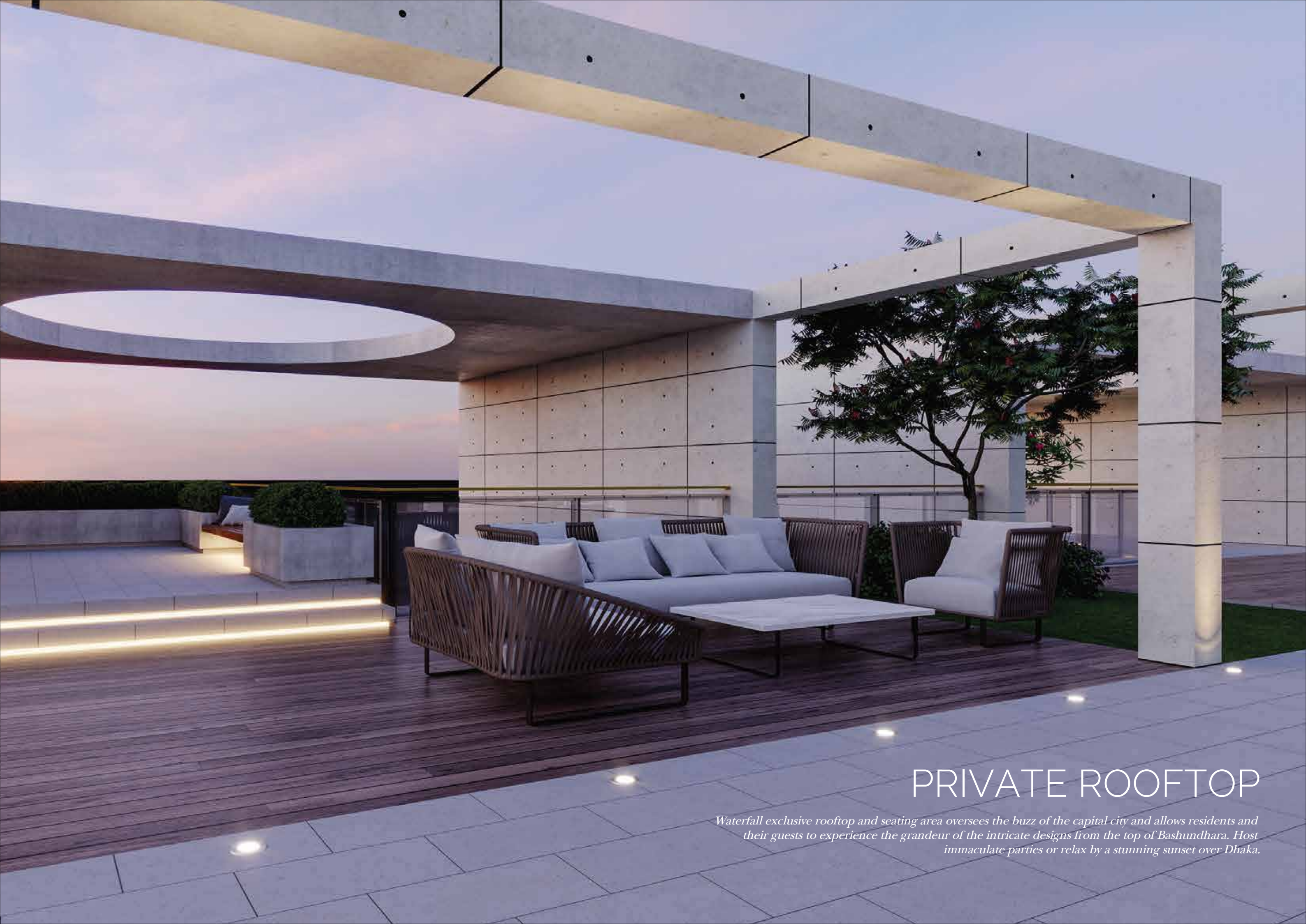
A marriage of elegance and careful craftsmanship, the generous and bright bedroom spaces create a truly contemporary ambiance.



WATERFALL VISAGE; COOL & CALM

Richly veined texture and depth to the bathroom's cool, considered palette, projecting a sense of serenity and relaxation.

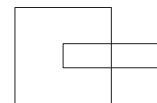
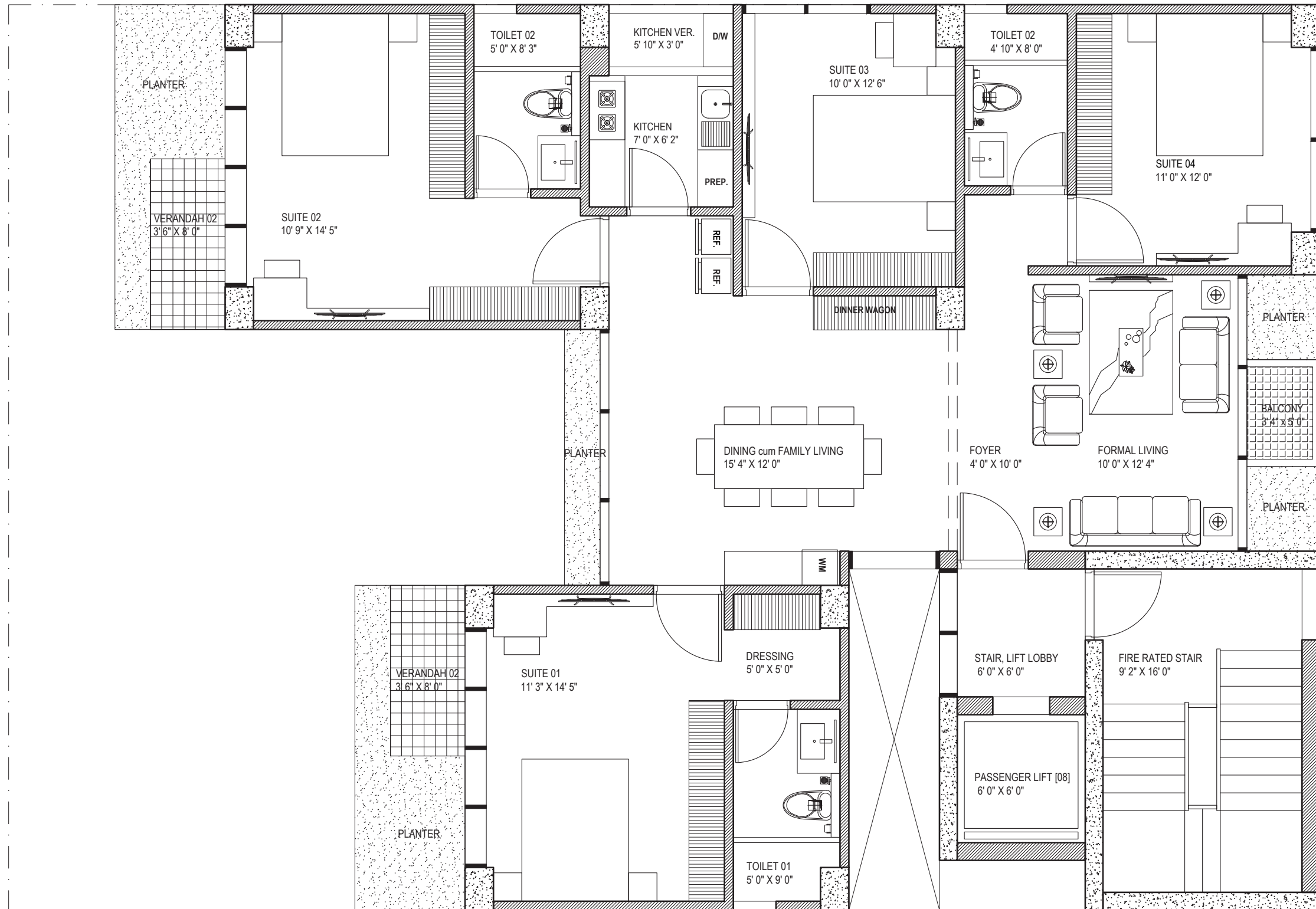




PRIVATE ROOFTOP

Waterfall exclusive rooftop and seating area oversees the buzz of the capital city and allows residents and their guests to experience the grandeur of the intricate designs from the top of Bashundhara. Host immaculate parties or relax by a stunning sunset over Dhaka.

ROAD



TYPICAL FLOOR PLAN
SCALE: N.T.S.





PAYMENT SYSTEM

First the share price of the land has to be paid

Name transfer from Bashundhora has to be paid within 30 days of land registration.

For Drawing design (Architecture, Structure, Plumbing, Electrical, Fire) Rajuk NOC, Soil Test, and Digital Survey have to be paid by 60 days of registration.

After starting the construction work from piling to finishing the project management charge and Construction costs can pay by installments per Month.



A VISION FOR LUXURY LIVING

CORPORATE BACKGROUND

Established in 2019, Salmon Developers Ltd. has quickly become well known in the Real Estate industry, known for its exceptional Residential, Commercial, and Land Development Projects. Based in Bangladesh, Salmon Developer's success is driven by a commitment to innovation and sustainable practices.

We pride ourselves on Delivering high-quality Developments that enhance the quality of life for our clients. Our team, along with our strategic partnerships with industry experts, Ensures that every project is completed on time and meets the highest standards. At Salmon Developers, we are Dedicated to Building a better future through visionary Real Estate solutions.

Salmon Developers Ltd.

Flat- B1, House -133, Road- 04, Block -A, Banani, Dhaka-1213.

+88 01711 574753, +88 01622 222262

www.salmondevelopersbd.com

